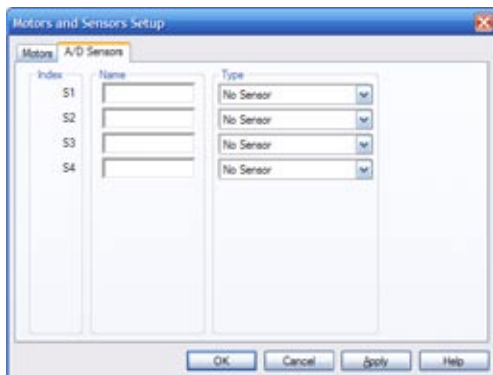


Sensing

Wall Detection (Touch) Quiz

NAME _____ DATE _____



1. The recommended method of configuring sensors in ROBOTC is to use the Motors and Sensors Setup menu shown above.
- True
 - False
-

2. What form does feedback from the Touch Sensor take?
- A number between 0 and 255, indicating how hard the button is being pressed.
 - A number, either 0 or 1, indicating Pressed or Not Pressed.
 - Pounds per square inch of pressure.
 - A or B, depending on how the user configures the sensor.
-

3. In plain English (or pseudocode), describe what the following code does.

```

1 while (SensorValue(touchSensor) == 1)
2 {
3     motor[motorC] = 100;
4     motor[motorB] = 0;
5 }

```

4. In general, when does a while loop run the body of its code?
- When its condition is true.
 - When its condition is false.
 - When the sensor gives feedback above the value of threshold.
 - If the motor has been given a power level and assigned a wait state in milliseconds.