

Movement

Labyrinth Challenge

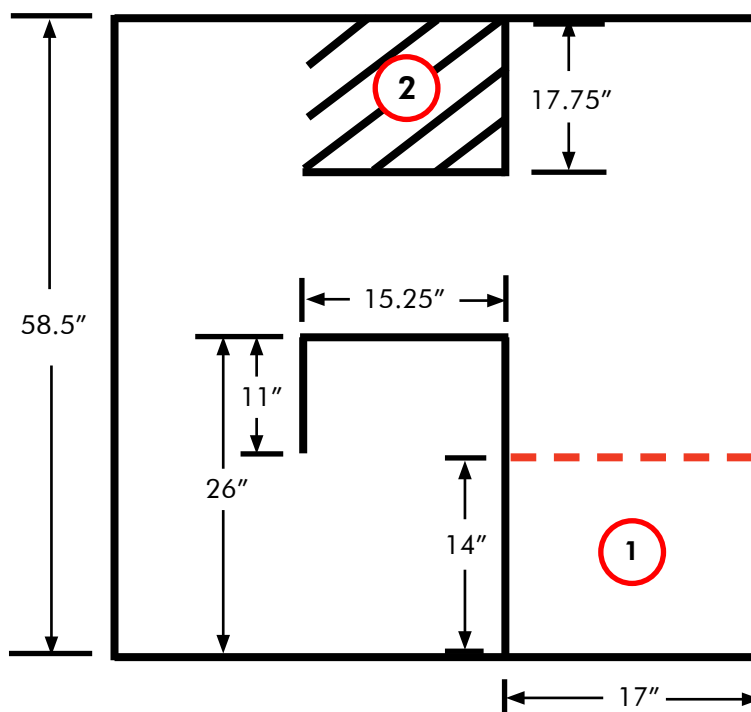
Challenge Description

This challenge features a sequence of turns that the robot must perform in order to get to the "end" of the Labyrinth. The robot must first begin at the starting point, and get to the goal area by completing turning and forward movement behaviors. The robot must NOT cross any lines.

Materials Needed

- Black electrical tape
- Red electrical tape
- Scissors (or cutting tool)
- Ruler (or straight edge)

Board Specifications



- 1 Robot must begin here, and then maneuver the robot to get to the goal area.
- 2 Robot must reach this goal area without crossing any black lines (Goal area lines).