

## Challenge

# Robo 500 Level 3

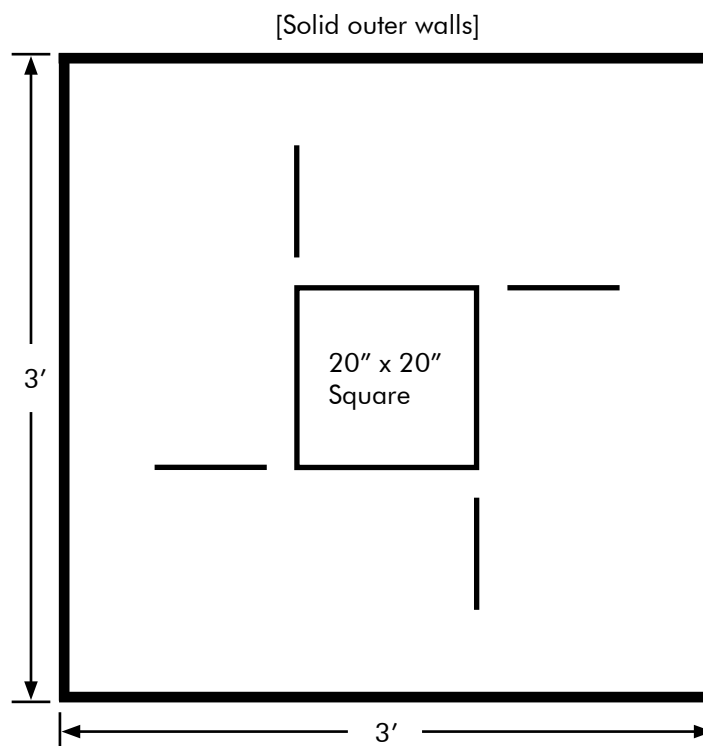
### Challenge Description

For this challenge, your robot must complete five laps around the given square course. The robot may use its ultrasonic sensor to accomplish this task, and should start facing forward with its wheels on any of the four lines outside the square.

### Materials Needed

- Black electrical tape
- Ruler (or straight edge)
- Scissors (or cutting tool)
- Solid walls

### Board Specifications



*Note: Diagrams are not drawn to scale*