

Challenge

Mousebot

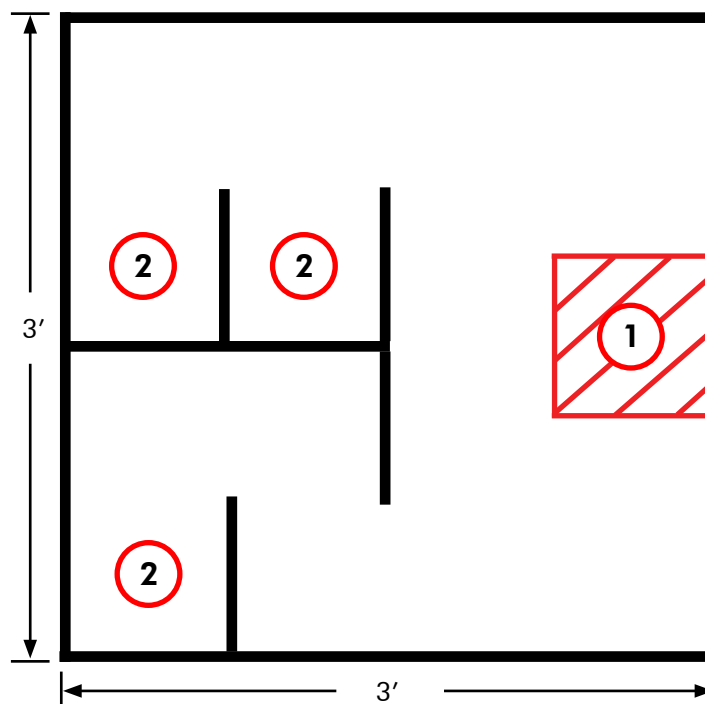
Challenge Description

Build and program a robot that can search a maze to find a piece of cheese without using a touch sensor. The light sensor should be able to identify the Styrofoam cups covered in yellow paper as cheese.

Materials Needed

- Black electrical tape
- Scissors (or cutting tool)
- 3 Styrofoam cups
- Red electrical tape
- Ruler (or straight edge)

Board Specifications



Note: Diagrams are not drawn to scale

- 1** Robot must begin here, and then maneuver to find the randomly placed cheese.
- 2** Cheese (yellow Styrofoam cups) can be placed in any of these locations.