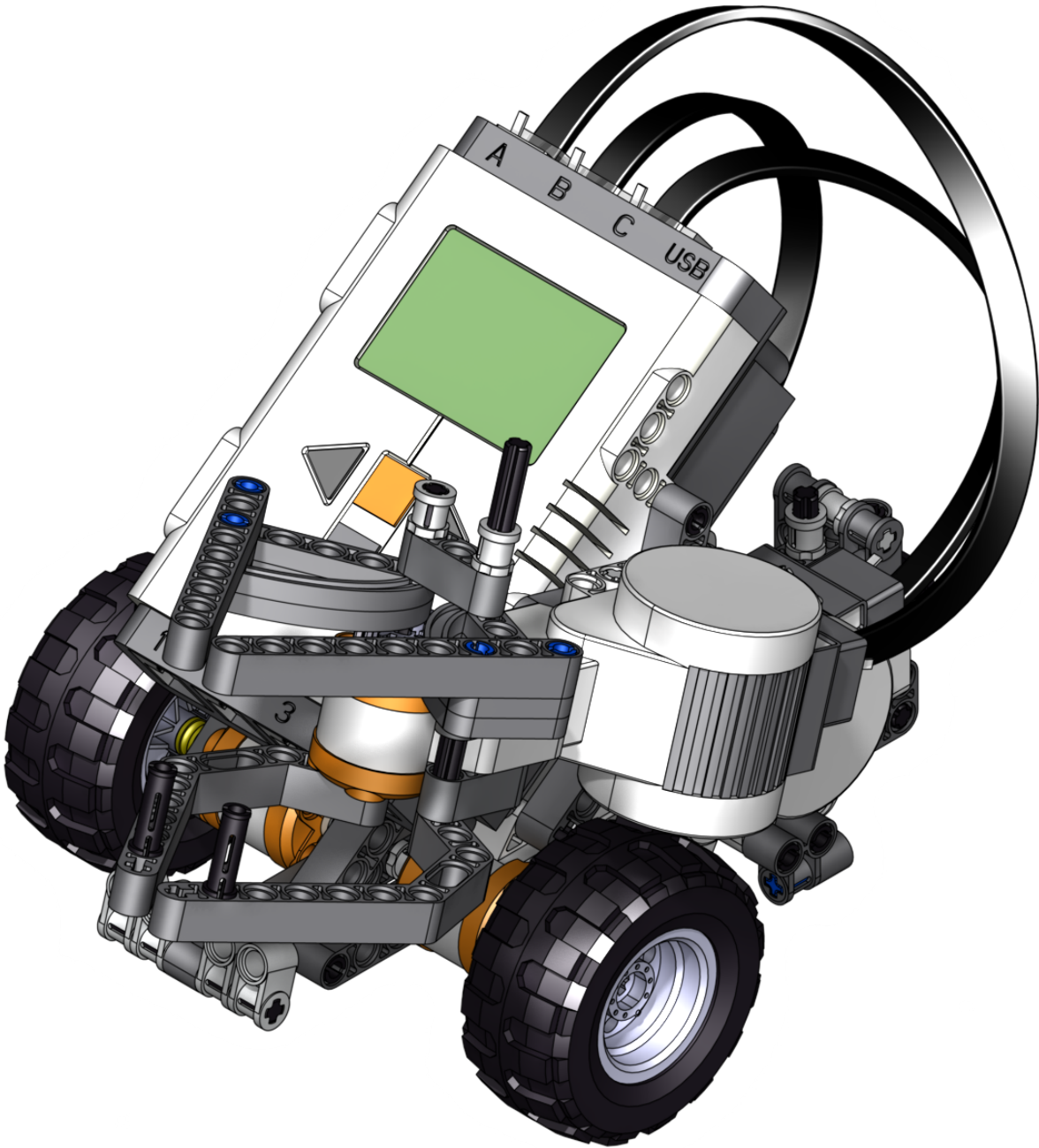


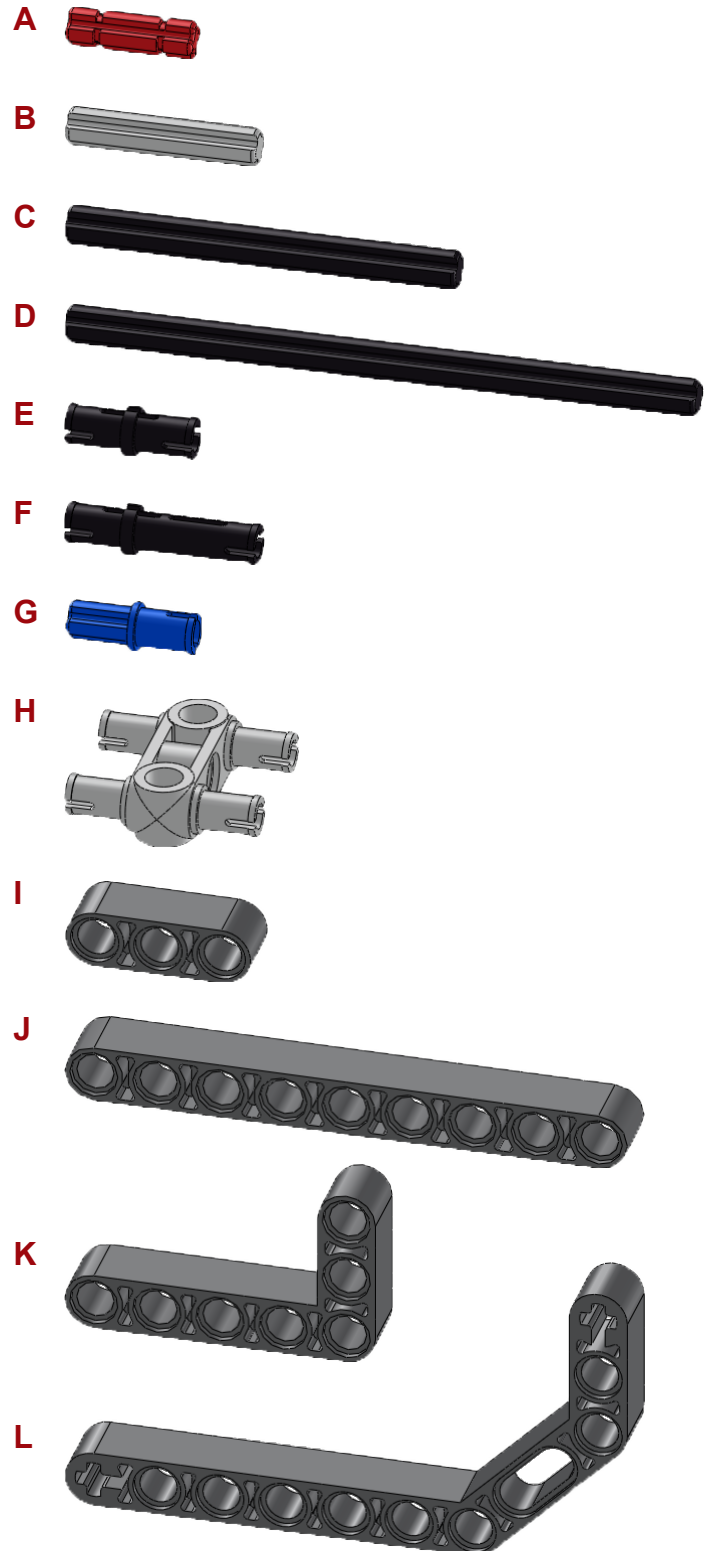
Building Instructions



Gripper Attachment

Gripper

- | | | |
|----|--------------------------------|---|
| 1x | TECHNIC Axle 2 | A |
| 2x | TECHNIC Axle 3 | B |
| 1x | TECHNIC Axle 6 | C |
| 1x | TECHNIC Axle 10 | D |
| 4x | TECHNIC Pin with Friction | E |
| 5x | TECHNIC Pin Long with Friction | F |
| 4x | TECHNIC Axle Pin with Friction | G |
| 2x | TECHNIC Connector 3W | H |
| 3x | TECHNIC Beam 3 | I |
| 2x | TECHNIC Beam 9 | J |
| 1x | TECHNIC Angle Beam 5 by 3 | K |
| 2x | TECHNIC Angle Beam 9 by 5 | L |

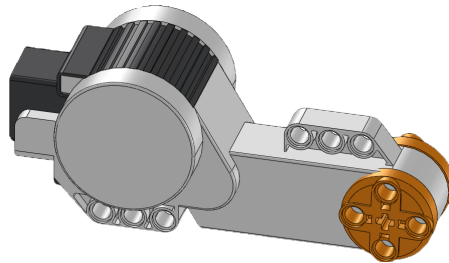
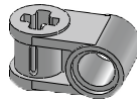
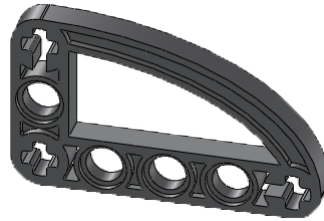


Gripper

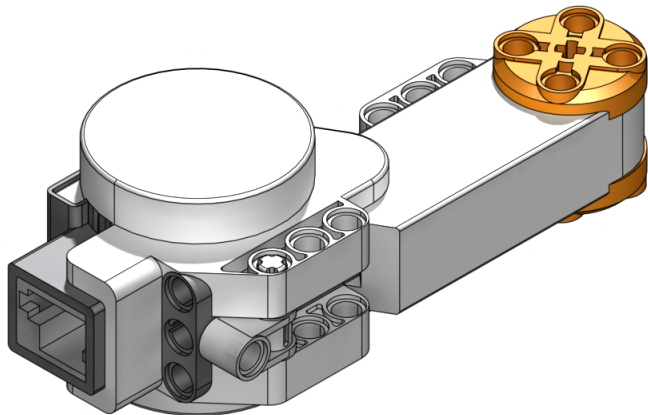
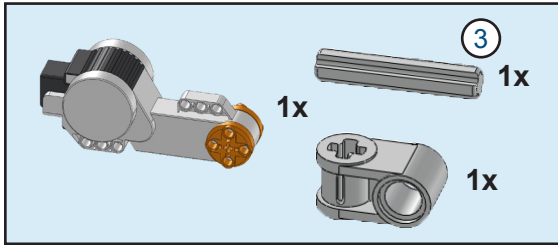
- 4x TECHNIC Beam Round
- 2x TECHNIC Crossblock 2
- 2x TECHNIC Bushing
- 2x TECHNIC Gear 16
- 1x LEGO NXT Motor
- 1x LEGO NXT Wire

- M
- N
- O
- P
- Q
- R

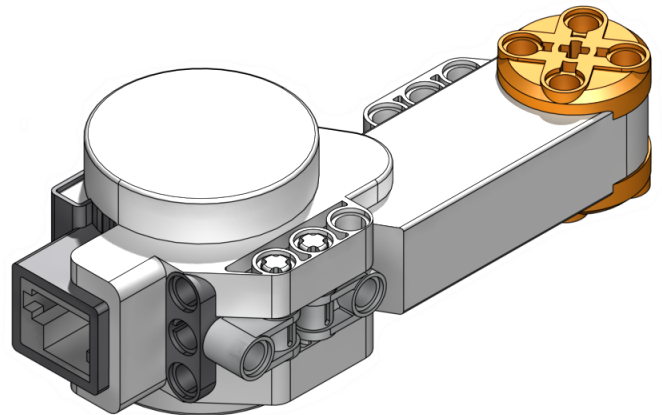
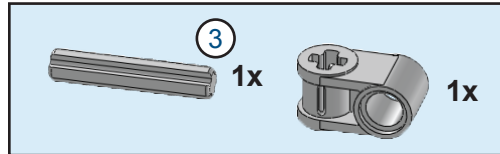
- M
- N
- O
- P
- Q
- R



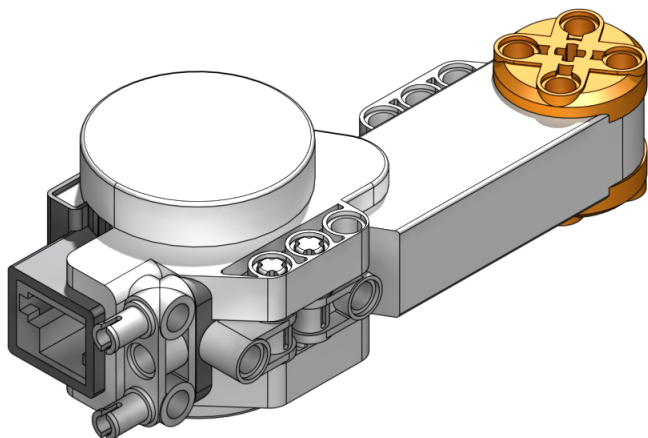
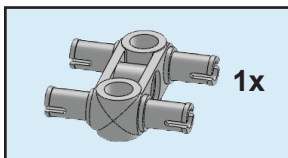
1



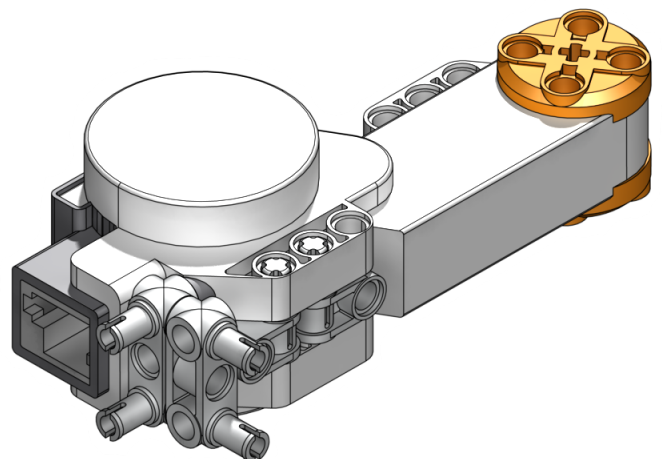
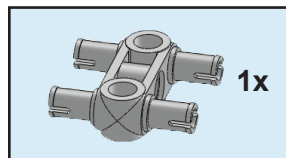
2



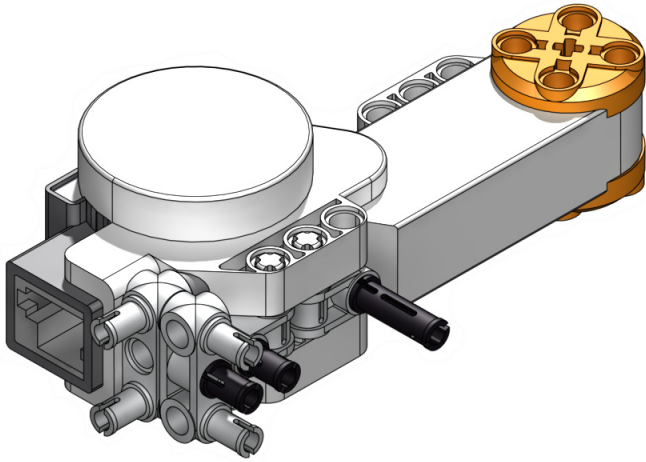
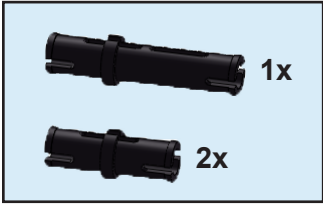
3



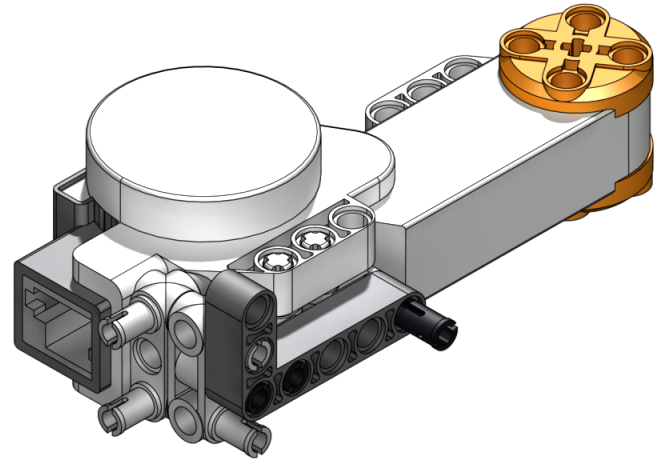
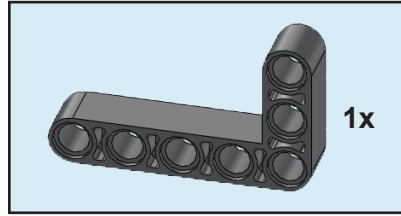
4



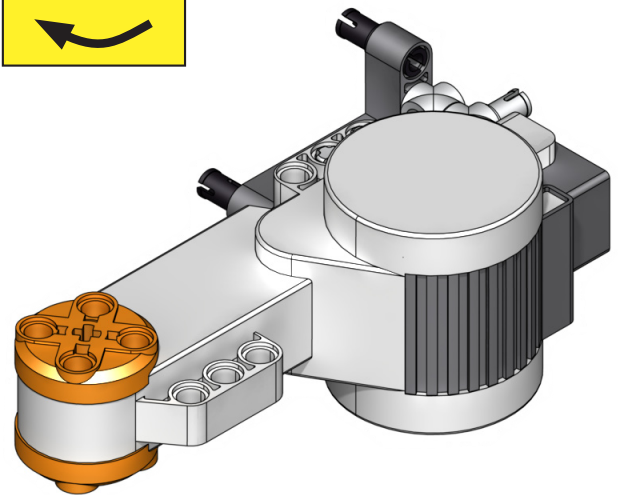
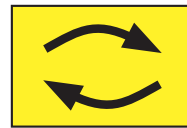
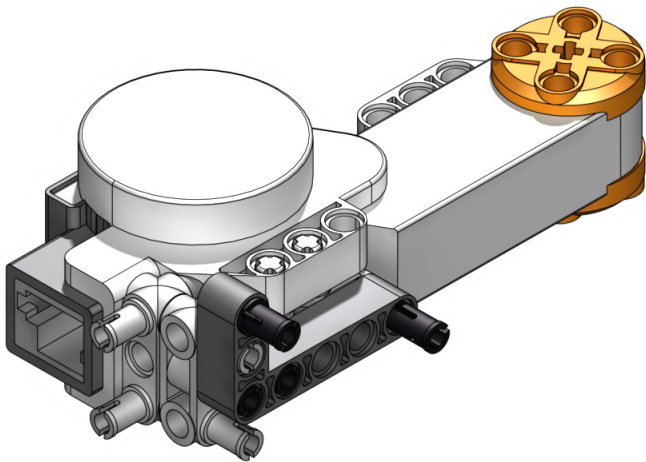
5



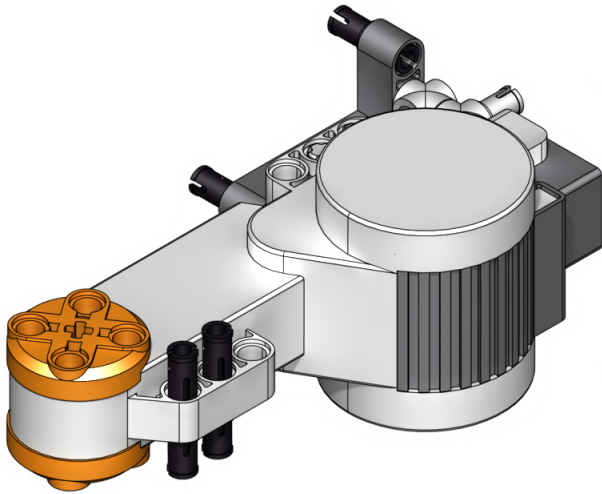
6



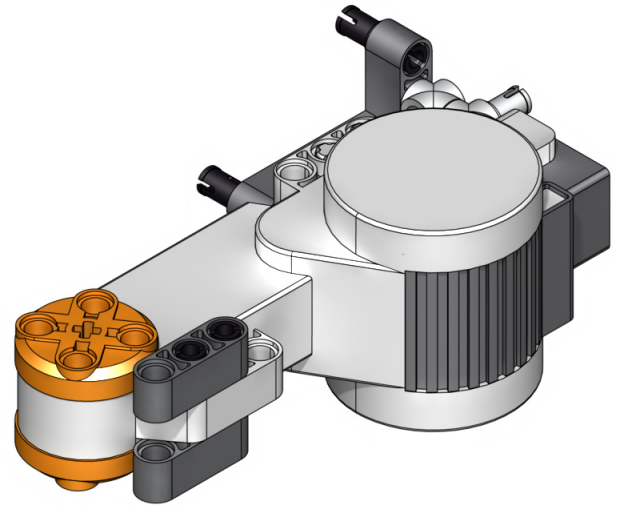
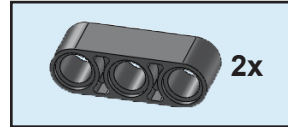
7



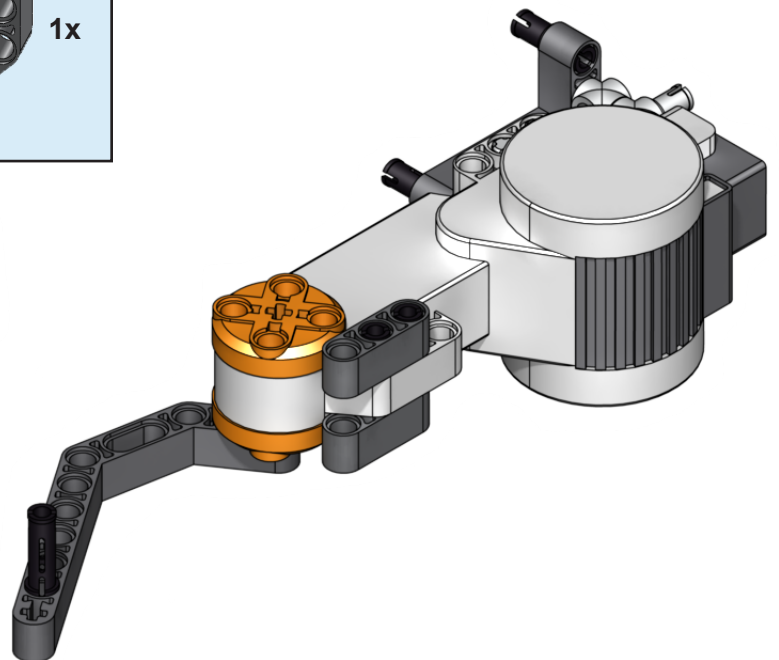
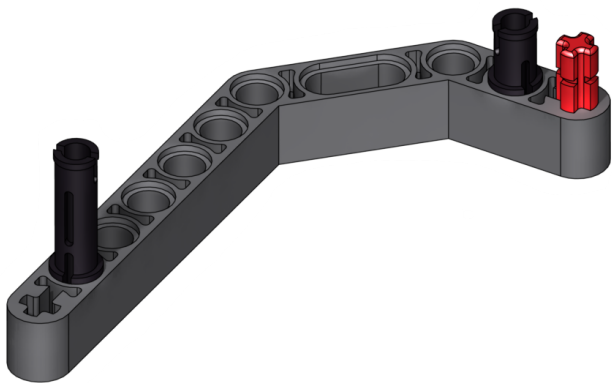
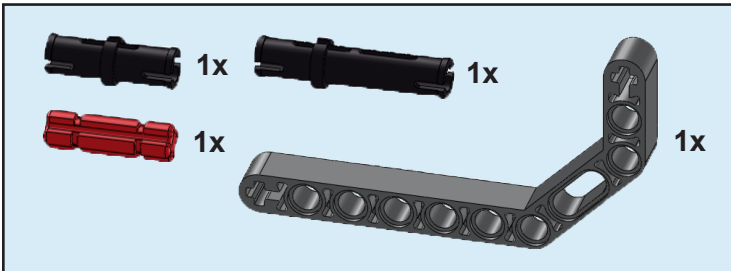
8



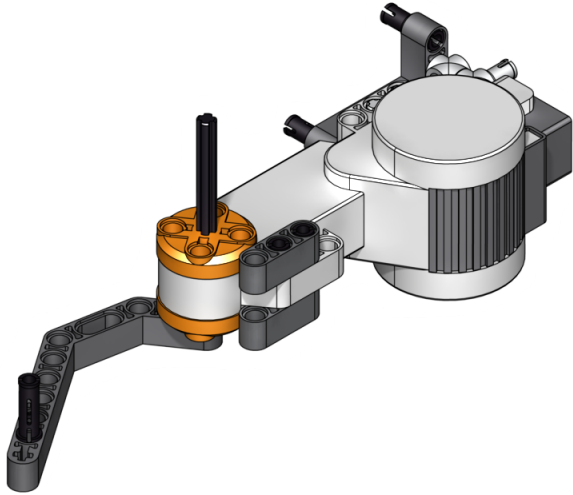
9



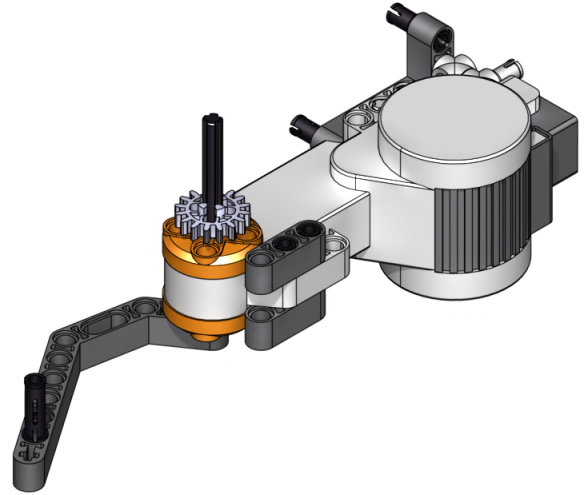
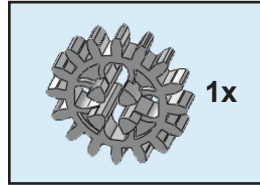
10



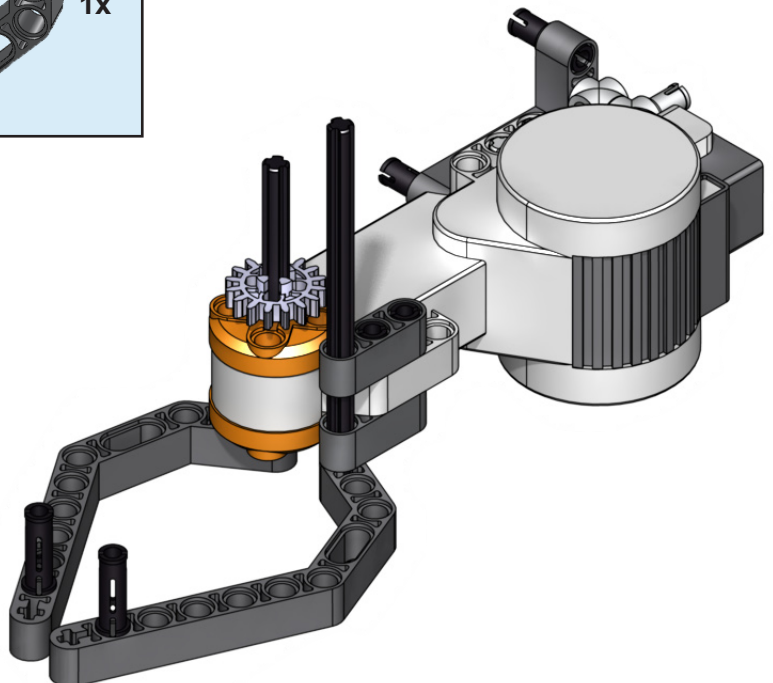
11



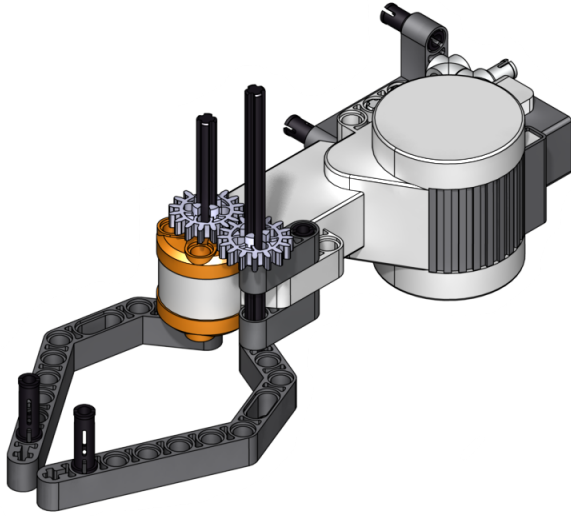
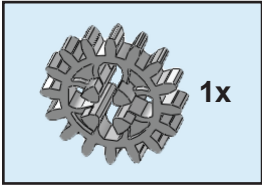
12



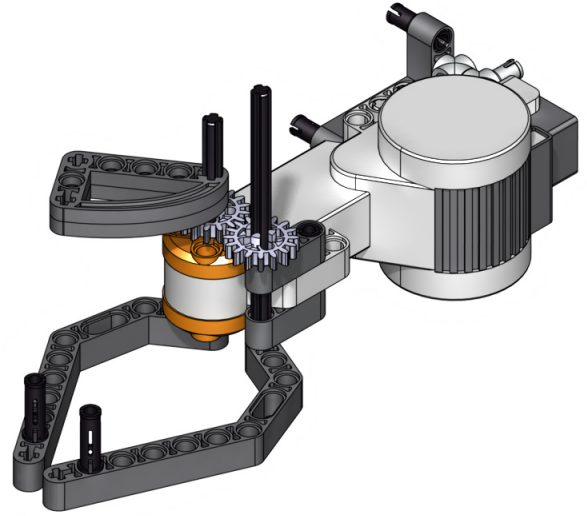
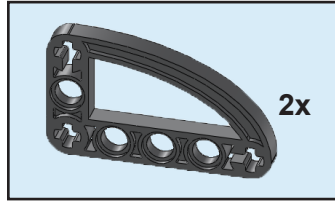
13



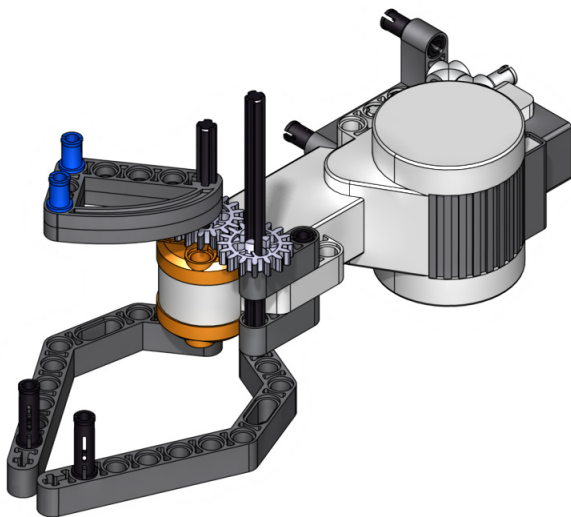
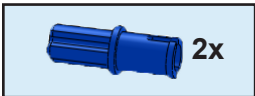
14



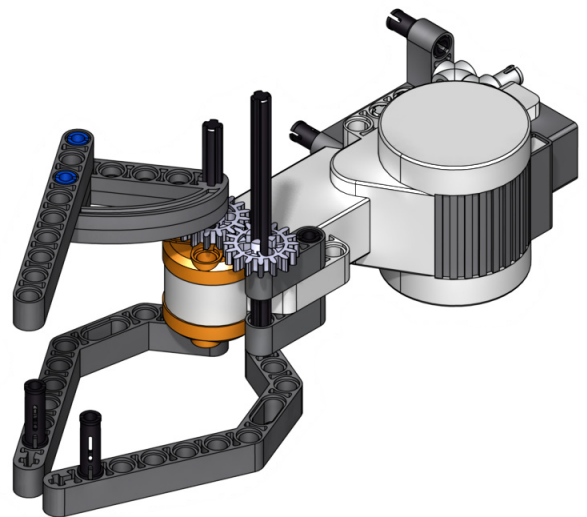
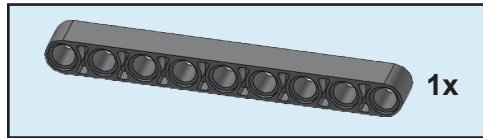
15



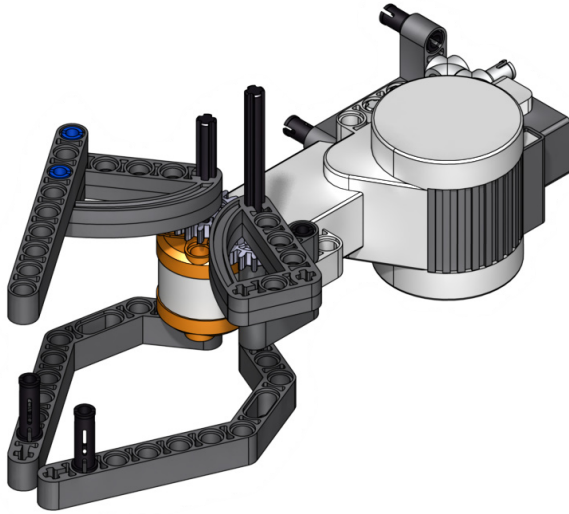
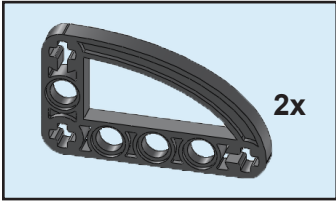
16



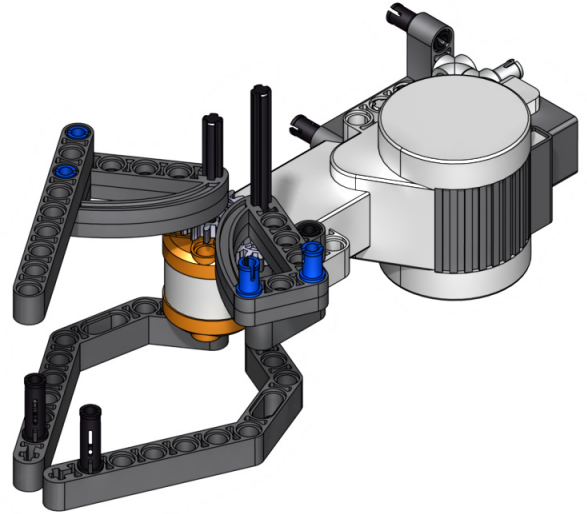
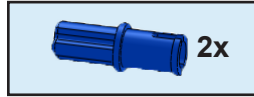
17



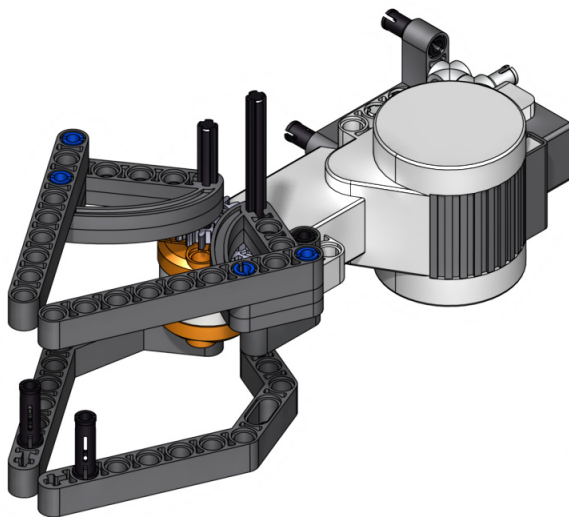
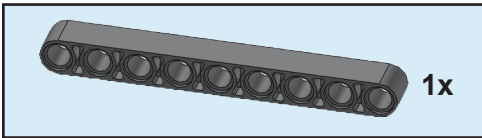
18



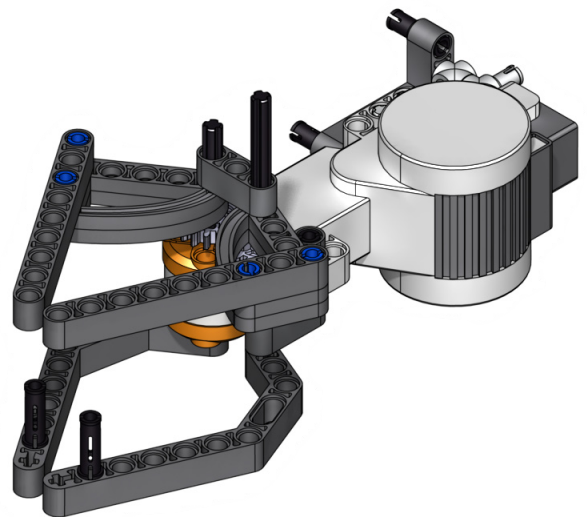
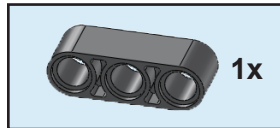
19



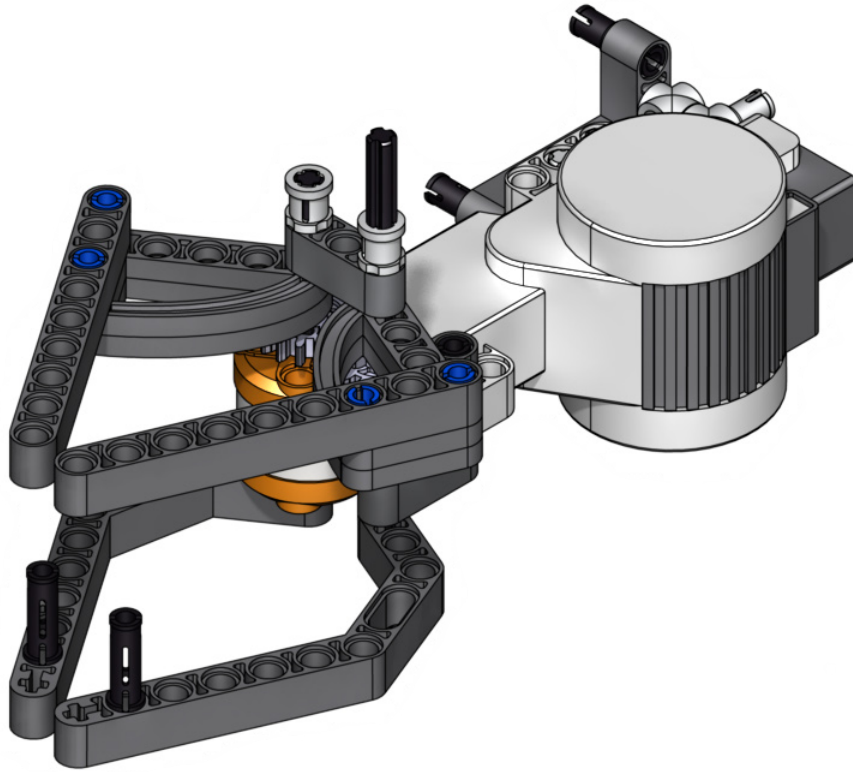
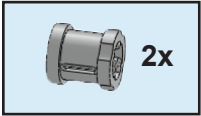
20



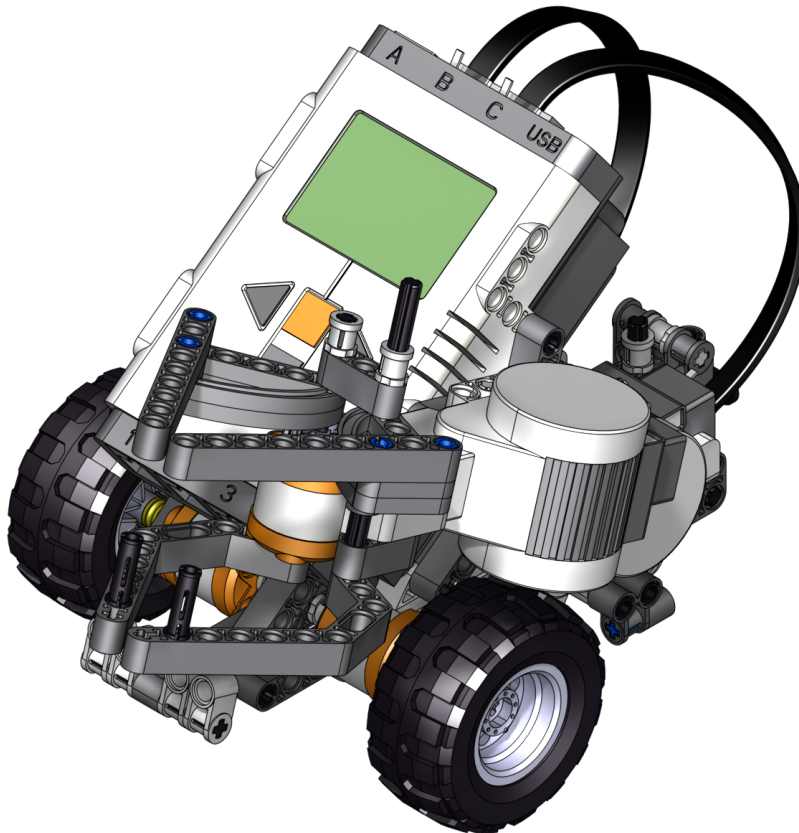
21



22



23



24

