

Setup

USB-to-Serial Driver Installation

In this lesson, you will learn how to install the Prolific USB-to-Serial Cable driver. Make sure you have administrative privileges on the computer before you begin.

You will need:

1. An Internet connection
2. A VEX USB-to-Serial Programming cable

1. In a web browser, go to www.robotc.net/download/cortex, locate the section labeled "Download Prolific Driver to use the USB-to-Serial adapter". Download the appropriate driver for your version of the Windows Operating System.

The screenshot shows a web browser window with the address bar containing <http://www.robotc.net/download/cortex/>. The website header includes the ROBOTC logo and navigation links for Home and Download. The main content area is titled "ROBOTC Downloads - CORTEX & PIC (Original VEX)" and features a yellow box with the text: "Download ROBOTC for CORTEX & PIC", "Platforms: Cortex, PIC (Original VEX)", "Version 3.04", and "Date Posted: Oct. 10, 2011". Below this is a link: "Click here to see how to install the Building License file >>>". A section titled "Installing more than one version of ROBOTC?" explains that no additional downloads are required. At the bottom, under "Additional Downloads:", there is a link to "Download the VEX CORTEX Device Driver:" with three sub-links. A red box highlights the link "Download Prolific Driver to use the USB-to-Serial adapter:" with two sub-links: "Prolific USB to Serial Driver (Windows XP)" and "Prolific USB to Serial Driver (Windows 7, VISTA)".

- 1a. Visit www.robotc.net

Go to www.robotc.net/download/cortex/

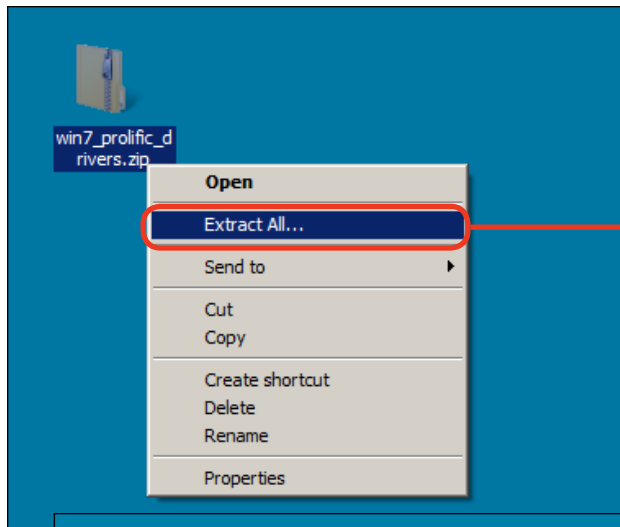
- 1b. **Download**

Locate the appropriate driver for your Operating System and download it.

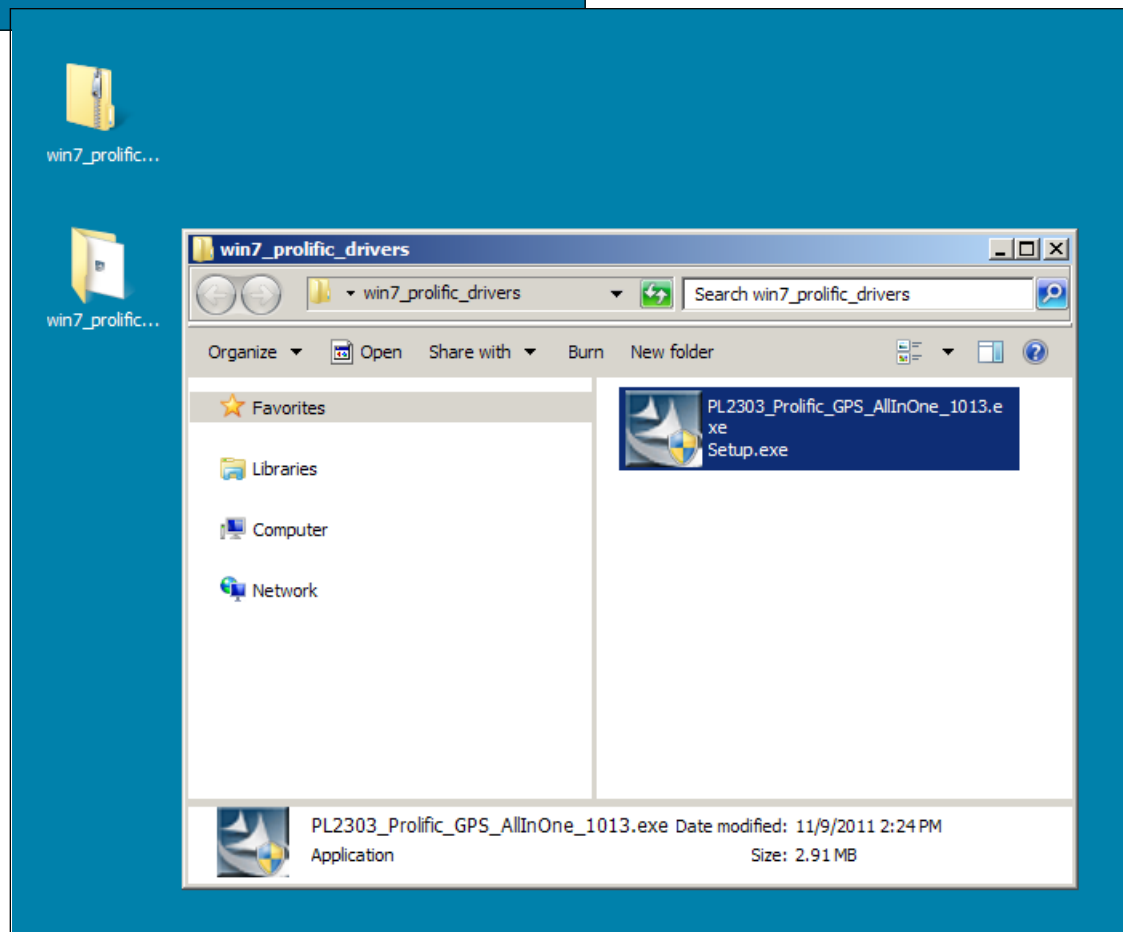
Setup

USB-to-Serial Driver Installation

- The installation file needs to be extracted from the downloaded file. Extract the installation file by right-clicking on the downloaded file, selecting "Extract All...", and following along with the prompts on your computer.



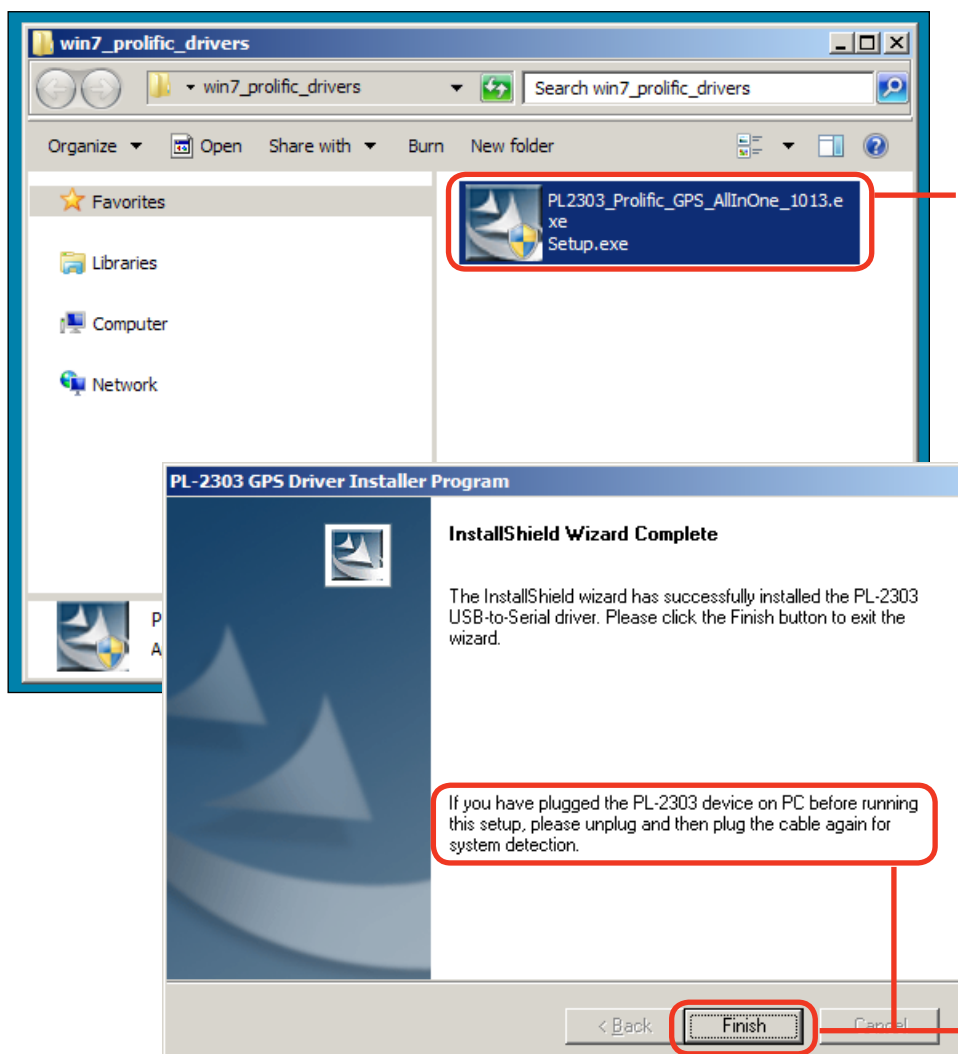
- 2a. Extract the file**
Right-click on the file you downloaded and choose "Extract All..."



Setup

USB-to-Serial Driver Installation

3. Once the installation file has been extracted, double-click on it to begin the installation process. Again, follow along with the prompts on your computer to install the driver.



The image shows a Windows Explorer window titled "win7_prolific_drivers" with a search bar containing "win7_prolific_drivers". The file list contains one file: "PL2303_Prolific_GPS_AllInOne_1013.exe Setup.exe". A red box highlights this file. A red arrow points from the text "3a. Start the Installation" to this file.

Below the Explorer window is the "PL-2303 GPS Driver Installer Program" window. The title bar reads "PL-2303 GPS Driver Installer Program". The main content area says "InstallShield Wizard Complete" and "The InstallShield wizard has successfully installed the PL-2303 USB-to-Serial driver. Please click the Finish button to exit the wizard." A red box highlights a paragraph of text: "If you have plugged the PL-2303 device on PC before running this setup, please unplug and then plug the cable again for system detection." A red arrow points from the text "4a. Follow Prompts" to the "Finish" button at the bottom of the window.

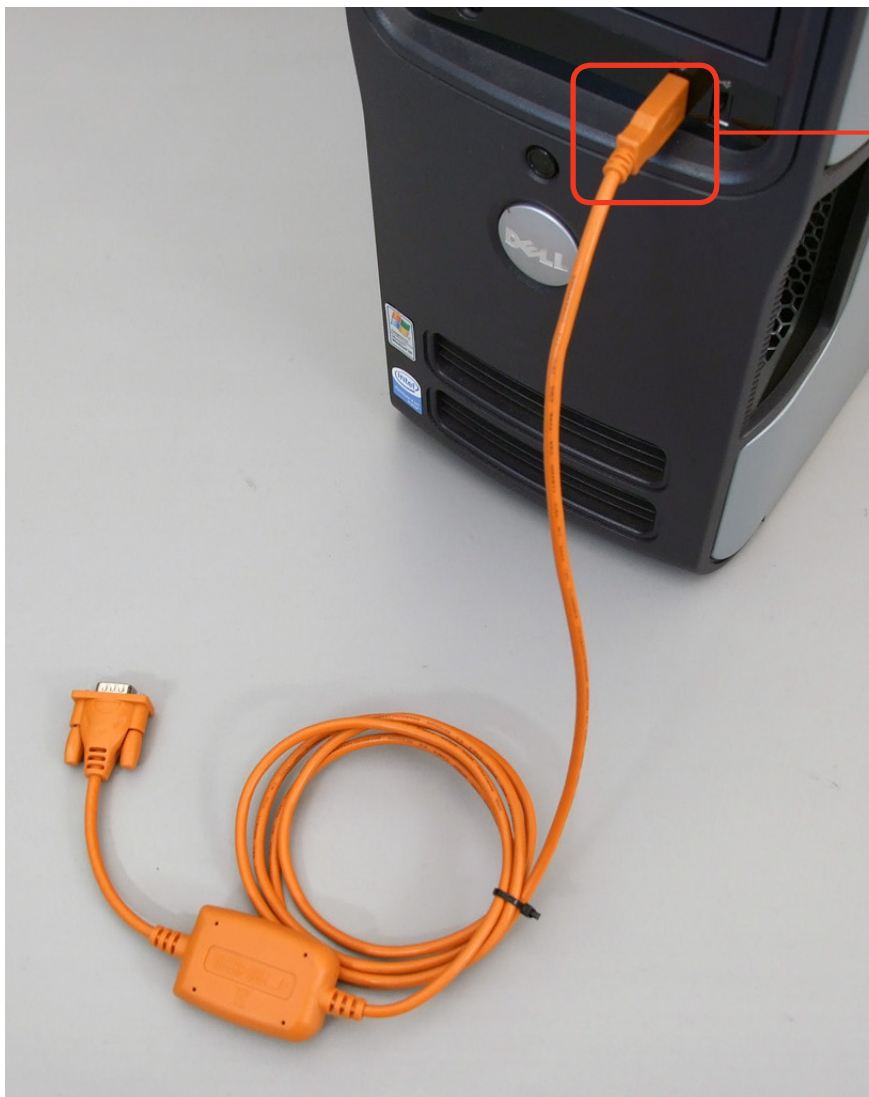
3a. Start the Installation
Double-click on the installation file to start the driver installation.

4a. Follow Prompts
Complete the installation according to the onscreen instructions.

Setup

USB-to-Serial Driver Installation

4. Connect the USB-to-Serial Cable to your computer to complete the installation. Windows should recognize the cable and successfully add the new hardware.



- 4a. Finish the Installation**
Connect the USB-to-Serial cable to your computer to complete the installation.